



# POLAR HORIZONS

Expedition Cruising in the Arctic & Antarctica



2022-2023



*A. Vorea*

Angelica Vorea  
CEO, Poseidon Expeditions

## Dear Polar Travelers,

With our new 2022-23 catalog, we're pleased to bring you some of the very best adventures possible in the polar realm – Antarctica and South Georgia, Greenland, Svalbard, Franz Josef Land and even the very top of the world, the North Pole.

The new seasons mark our 23rd year of taking curious guests into remote, icy domains where stark geological features – glaciers, icebergs and towering fjords – serve as scenic backdrop to wildlife found nowhere else on earth.

Throughout your journey with Poseidon, you'll be accompanied by experienced experts – polar historians, marine biologists, geologists and ornithologists – who serve as your guides during frequent excursions ashore. They'll also provide relevant, enlightening presentations on topical subjects of interest in the spacious and comfortable Oceanus Lounge. Our travelers want to feel a part of the environment, to experience it first-hand and learn about the challenges facing these fragile ecosystems. Our goal is to help them accomplish this, all in the spirit of adventure.

We do hope to have the pleasure of welcoming you aboard a Poseidon Expeditions vessel!



## Contents

<b>6</b>	About Us	<b>48</b>	THE ANTARCTIC
<b>8</b>	Our Commitment	<b>50</b>	Antarctic Peninsula
<b>10</b>	Our Polar Team	<b>54</b>	South Georgia and Falkland Islands
<b>14</b>	Polar Seasons	<b>58</b>	Adventure Options
<b>16</b>	THE NORTH POLE	<b>60</b>	M/V Sea Spirit
<b>20</b>	I/B 50 Let Pobedy	<b>68</b>	Pre-departure Hotels
<b>28</b>	THE ARCTIC	<b>69</b>	Expedition Parka
<b>30</b>	British Isles	<b>70</b>	Passenger Reviews
<b>34</b>	Svalbard	<b>71</b>	Loyalty Program
<b>38</b>	Franz Josef Land	<b>72</b>	Terms and Conditions
<b>42</b>	Greenland		

# In the Spirit of Adventure: Polar Expedition Cruising

We started Poseidon Expeditions in 1999 with the simple belief that expedition cruising is the best way to see the polar regions. 22 years later, over 20 400 passengers agree: our unique style of travel offers you a genuine adventure served with healthy measures of education and relaxation. Your polar cruise experience on our small ships will be deeply personal and immensely satisfying.

## Our polar history in numbers:

**20**   
 seasons of successfully achieving 90° north – the geographic North Pole – on every departure.

**5**   
 consecutive years operating *Sea Spirit* to the Arctic and Antarctica.

**14**   
 direct crossings between Svalbard and Franz Josef Land with *Sea Spirit*.

**20 400**   
 passengers with dreams fulfilled in the Arctic and Antarctica.

### The expedition ship advantage

Our polar expedition ships are perfectly suited to take you in safety and comfort to the most extreme places in the world. You will get even closer with our Zodiac landing craft, an exclusive feature of expedition ships. With us, you will not only reach your polar destinations, but you will experience them in a way that will last a lifetime.

### Firsthand discovery with polar experts

Also at the heart of your adventure will be ample face-time with marine biologists, geologists, ornithologists and other specialists who make your expedition voyage come alive. In the spacious and comfortable Oceanus Lounge, enjoy enlightening presentations that take you behind what's merely visible outside. On Zodiac excursions, explore the polar realm in small groups accompanied by these same naturalists and scientists.

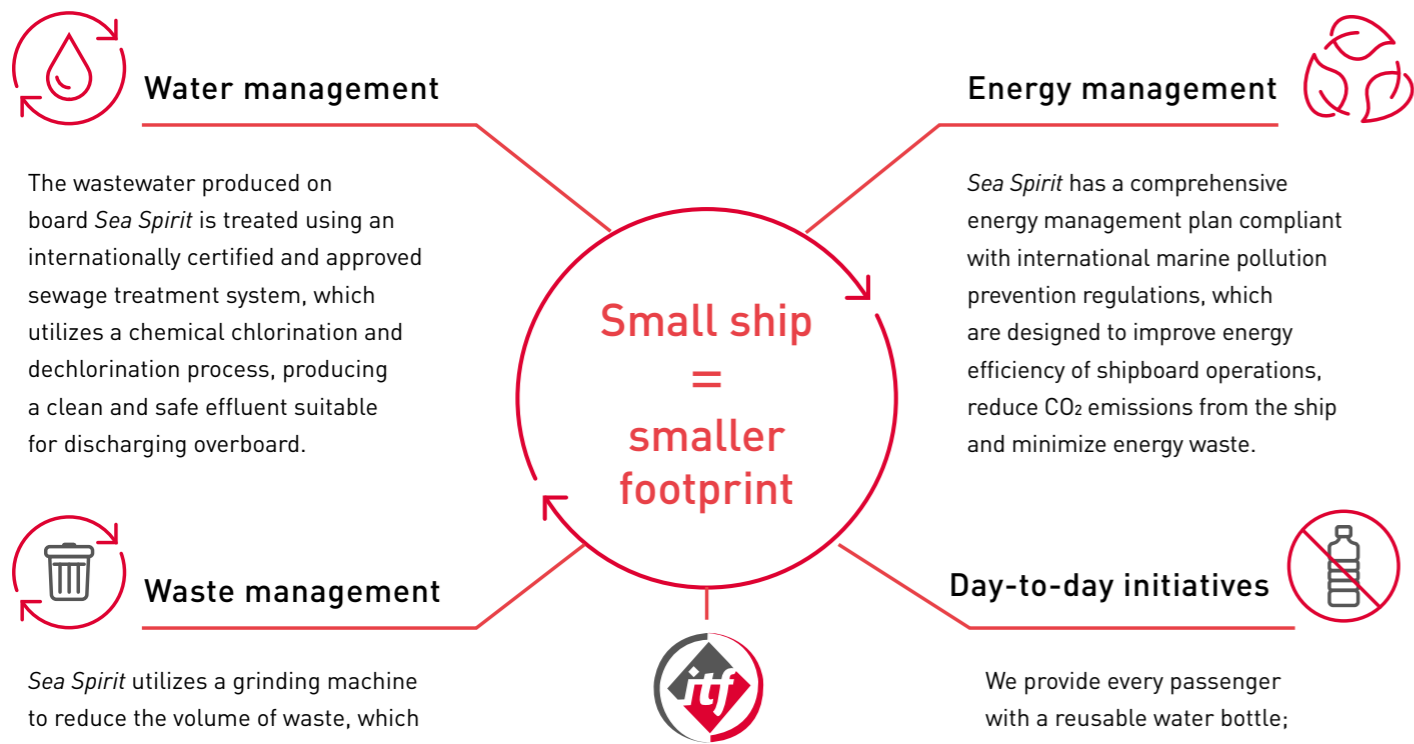
### Discerning international travelers

Adventurers from all walks of life have discovered the advantages of cruising in the polar regions with us. Our wide-ranging itineraries and multilingual expedition programs attract travelers representing a diversity of nationalities and cultures, united by their passion for exploring the most exciting wilderness areas on the planet.



# Environmental Promise

We pledge our commitment to Arctic and Antarctic conservation and our support of related scientific research while striving to leave a smaller footprint when we travel with a variety of smaller- and larger-scale measures for our ships, passengers and staff. To be able to contribute to the preservation of the polar regions is a responsibility and an honor.



## Water management

The wastewater produced on board *Sea Spirit* is treated using an internationally certified and approved sewage treatment system, which utilizes a chemical chlorination and dechlorination process, producing a clean and safe effluent suitable for discharging overboard.

## Energy management

*Sea Spirit* has a comprehensive energy management plan compliant with international marine pollution prevention regulations, which are designed to improve energy efficiency of shipboard operations, reduce CO<sub>2</sub> emissions from the ship and minimize energy waste.

## Waste management

*Sea Spirit* utilizes a grinding machine to reduce the volume of waste, which is later separated and discharged or unloaded ashore per local and international regulations. Waste aboard *50 Let Pobedy* is treated and stored in a special low-temperature eco-compartment, eliminating any waste discharge into the ocean.

## Day-to-day initiatives

We provide every passenger with a reusable water bottle; single-use plastic bottles and containers are eliminated. On board *Sea Spirit*, chefs adhere to guidelines recommended by the Marine Stewardship Council for sustainability with regard to the types of seafood served.

## Safe employment practices & standards

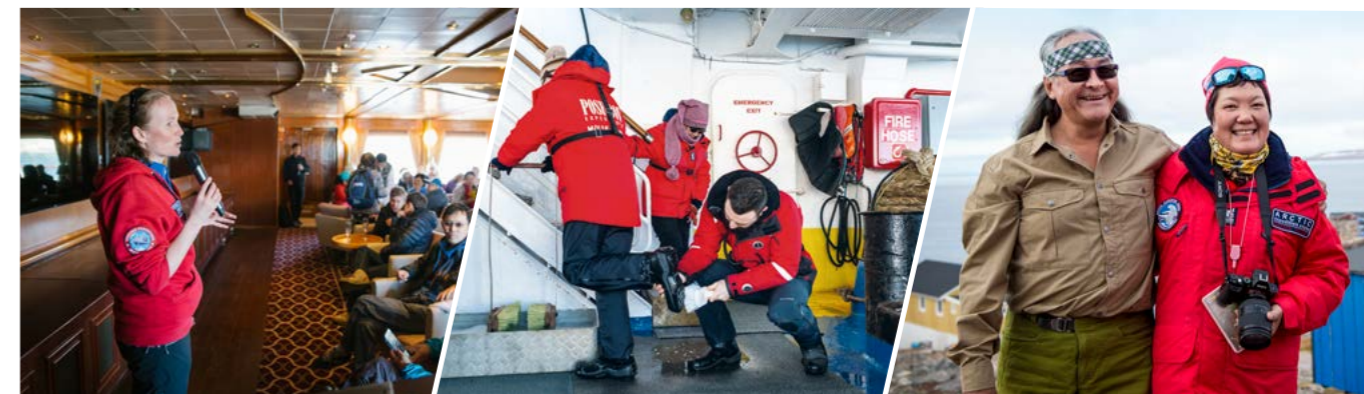
Our *Sea Spirit* crew return year after year for employment because the ship is an excellent place to work. The ship is regularly checked by International Transport Workers Federation (ITF) inspectors and complies with all requirements for crew employment.

## Fuel and emissions

For our polar cruises, *Sea Spirit* uses high-quality marine gas oil compliant with the limit set for sulfur by the International Maritime Organization. *50 Let Pobedy* is propelled by electric motors using electricity generated by nuclear reactors, bringing CO<sub>2</sub> emissions almost down to zero.

## Clean Up Svalbard

In Spitsbergen, we take part in the “Clean Up Svalbard” initiative coordinated by AECO. Joined by enthusiastic passengers, our staff collect the debris we find washed up on otherwise pristine beaches and transport it to Longyearbyen, where we deposit it in dedicated bins for proper processing.



## Raising awareness

In presentations and briefings, our expert polar scientists and expedition leaders candidly discuss the issues facing Arctic and Antarctic ecosystems and what we can all do to help preserve wildlife in these fragile environments.

## Protecting nature

During shore excursions, we follow the guidelines established by AECO and IAATO to protect the local flora and fauna, including rigorous boot washing before and after landings. We strive to leave no lasting signs of our visit.

## Working with locals

Wherever we go, we support the communities we visit and we respect the indigenous stewards of the wild places we explore. During excursions and when provisioning, we ensure our activities contribute to local economies.

## MEMBERSHIPS



### IAATO

As a member in good standing of the International Association of Antarctica Tour Operators (IAATO) since 2011, Poseidon Expeditions is committed to observing its standards of operations and requirements to practice sustainable travel to Antarctica.



### AECO

Among other things, the Association of Arctic Expedition Cruise Operators (AECO) draws up guidelines on how to interact with wildlife, the Arctic ecosystem and local communities. We are honored to contribute as a member in good standing since 2011.

# Our Polar Professionals



OUR EXPEDITION LEADERS ARE SEASONED PROFESSIONALS WITH THE SKILLS AND EXPERIENCE TO TAKE YOU ON THE JOURNEY OF A LIFETIME THROUGH THE WORLD'S MOST EXTREME AND CHALLENGING POLAR ENVIRONMENTS.



A polar expedition leader is responsible for coordinating the myriad of human and technical resources required to craft the perfect expedition experience in the face of ever-changing weather and ice conditions.



## Anja Erdmann-Rutten > Expedition Leader

Anja is from Potsdam, Germany and has been leading polar expeditions since 2000. She feels at home in the icy realm of Antarctica and the wilderness of Greenland, where she began her career. Anja is renowned for her knowledge of natural and cultural history, her enthusiastic and engaging multilingual lectures, and her steadfast commitment to polar conservation. She speaks German, English, Danish and Norwegian.

## Christian Bruttel > Expedition Leader

Christian is originally from the Black Forest in the south of Germany. In 2012, after studying to be a teacher and traveling around the world in the pursuit of active adventure, he settled in the High Arctic community of Longyearbyen, in Svalbard, where he trained to be a polar guide. Since then, Christian has worked throughout the Arctic and Antarctica as an adventure guide, polar historian and expedition leader.

## Huw Lewis-Jones > Expedition Leader

Huw is an experienced polar guide and historian of exploration, culture, photography and the environment, with a Ph.D. from the University of Cambridge. He served as curator of the Scott Polar Research Institute and the National Maritime Museum in London. Huw regularly appears on television and radio as an expert on the history of polar exploration. His award-winning books have been published in 14 languages.

## Ryan Hope-Inglis > Expedition Leader

Ryan comes from Poole in southwest England and lives in Longyearbyen, Svalbard. He has extensive experience in both the Arctic and Antarctica, with a special affinity for Franz Josef Land. Drawing from his backgrounds in seafaring, expedition logistics, adventure sports and aerospace engineering, Ryan meets every polar challenge with unrivaled confidence and skill. He has been an integral part of our team since 2015.

# Our Polar Experts

OUR EXPERT TEAM OF ADVENTURE GUIDES, SCIENTISTS, HISTORIANS AND POLAR EXPLORERS COME FROM ALL OVER THE WORLD TO ENRICH YOUR EXPEDITION WITH SPECIALIZED SKILLS AND PERSONAL INSIGHTS.



## Aaron Strahlke

**Geologist**

Aaron is an experienced polar guide and geologist from Berlin, Germany. He earned his master's degree from the Heriot-Watt University in Edinburgh, Scotland. His expertise is in soft rock geology, tectonics and geophysics. He is also a German-English translator.

## Ida Olsson

**Expedition Leader, Kayak Master**

Ida is a wilderness guide from Sweden living in Svalbard. She has worked throughout the Arctic and Antarctica as a certified specialist in polar sea kayaking. In 2018, she skied to 90° North as a member of the all-female Euro-Arabian North Pole expedition.

## John Bozinov

**Photographer**

John is a professional wildlife and travel photographer from Wellington, New Zealand. His artistic passion and pursuit of adventure were shaped from an early age by wild environments. He is also a photography instructor and popular Instagram blogger.

## Felicity Aston

**Polar Explorer**

Felicity is a British polar explorer. In 2012 she became the first person to ski alone across Antarctica using only muscle power and in 2018 she led the Women's Euro-Arabian North Pole skiing expedition. She is a recipient of the prestigious Queen's Polar Medal.

## Georgina Strange

**Ornithologist**

Georgina is an expert on subantarctic birdlife. She is also an internationally acclaimed wildlife photographer. Her love of birds and artistic inspiration are drawn from her upbringing on the spectacular New Island Nature Reserve in the Falkland Islands.

## Sanna Kallio

**Geologist**

Sanna is an expedition guide from Finland with master's degrees in geology and glaciology. Her research has taken her around the world. As an adventurer, she has traversed the Greenland Ice Sheet and skied from the coast of Antarctica to the South Pole.



## Saskia Travert

**Assistant Expedition Leader**

Saskia is a lifelong tourism professional and world traveler from Réunion Island. She has many years of experience all around Antarctica, the Arctic and the North Pole. She brings her extensive polar knowledge and exceptional organizational skills to the role of AEL.

## Eduardo Larranaga

**Marine Biologist**

Eduardo is a marine biologist from Lima, Peru. He specializes in marine mammal conservation and ecology in the polar regions. He has been working on expedition ships since 2015 as a lecturer, sea kayak guide, Zodiac driver and photographer.

## Marta Duch-Corominas

**Assistant Expedition Leader**

Marta, from Barcelona, has been going to sea since the age of eight. She was part of the 2004 Spanish pre-Olympic sailing team in Athens and she has crossed the infamous Drake Passage in a sailboat. She has been guiding in the Arctic and Antarctica since 2011.

## Clive Johnson

**Polar Explorer**

Clive has been exploring and working throughout the polar regions since 1975 and is regarded as one of the most experienced polar guides in the United Kingdom. He is the recipient of the Queen's Polar Medal and is a Fellow of the Royal Geographic Society.

## Boris Solovev

**Biologist**

Boris is a biologist from Russia who specializes in biodiversity of oceanic ecosystems. He conducts marine mammal conservation research throughout the Russian Arctic and works with the World Wildlife Fund to plan marine protected areas.

## Falcon Scott

**Historian**

Falcon is a British polar historian. He is the only grandson of Captain Robert Falcon Scott, legendary leader of the Terra Nova Antarctic Expedition. Falcon's many polar pursuits include capturing the unrivaled beauty of Antarctica with his art.

## Regions of the Arctic

During the boreal summer, from May through September, our expedition ship *Sea Spirit* moves throughout the Arctic regions, making the most of seasonal sea ice and wildlife distribution patterns. You will always find her in the right place, at the right time.



### Svalbard Early summer

Svalbard's resident polar bears welcome the summer with a frenzy of hunting activity. Millions of migratory seabirds and marine mammals join the feast. Snowfields give way to flowering tundra while glaciers shimmer in 24-hour daylight. Starting in late May, receding sea ice allows navigation along the beautiful west coast of Spitsbergen.



### Franz Josef Land High summer

From mid-July through August, peak summer conditions are perfect for exploring the wild High Arctic frontier of Franz Josef Land. Arctic seabirds and whales are at their most abundant and there is still plenty of sea ice around for polar bears and walrus. Meanwhile, melting snow reveals astonishing historical sites, literally frozen in time.



### East Greenland Late summer

In September, as Arctic nights become sufficiently dark, the magnificent fjords of East Greenland become the ideal place to watch mesmerizing northern lights displays. Days are still long enough to explore an outsized landscape of polychromatic mountains, blue glaciers, shining white icebergs and tundra valleys awash in autumn colors.

## Seasons of Antarctica

Expedition cruising in Antarctica takes place from late October through March, when the austral summer floods the region with light and food. The breeding cycles and feeding patterns of various wildlife species will affect your experience throughout the seasons.



### Antarctic awakening Early summer

Snow and ice are plentiful in October and November as millions of ocean-going penguins and seabirds return to Antarctica at the start of their breeding season. Courtship rituals take place and eggs are laid. In South Georgia, gigantic bull elephant seals battle ferociously for control of harems on the beaches. Newborn pups are soon to follow.



### Feeding frenzy High summer

December and January deliver the warmest weather, nearly continuous daylight and frenetic wildlife activity. This is the best time to observe fluffy penguin chicks in their nests. Great numbers of whales arrive in Antarctica to begin non-stop feeding on swarms of krill. The beaches of South Georgia are jam-packed with king penguins and fur seals.



### Coming of age Late summer

February and March are the prime months for viewing maturing penguin youngsters and energetic seal pups. An abundance of young animals and their many predators set the stage for dramatic events and amazing photo opportunities. This is also the best time for incredible encounters with whales of all kinds.

# The North Pole

AN INCREDIBLE JOURNEY ON A UNIQUE  
VESSEL TAKES YOU THROUGH AN OCEAN  
OF ICE TO THE TOP OF THE WORLD.



## North Pole > Top of the World



### Reasons to discover the North Pole with us:

- Take advantage of a rare opportunity to travel aboard a time-tested, nuclear-powered vessel, purpose-built to the highest technical and ice-breaking standards in the world.
- No other vessel has achieved the unbroken record of success in attaining the geographic North Pole.
- Zodiacs and an onboard helicopter allow you to explore remote Franz Josef Land, home to abundant polar bears, walrus and Arctic birdlife.
- Stand on the bow and feel the power, as 75,000 horsepower propels your ship through ice up to three meters in thickness.

**From**  
Coming soon

**When to go**  
Coming soon

**Duration**  
13 Days

**Included activities**



After reaching the geographic North Pole, the icebreaker captain relies on his vast experience to find an area of ice with suitable thickness and integrity to support an ice landing at the top of the world.



## Aboard *I/B 50 Let Pobedy*

*I/B 50 Let Pobedy* ("50 Years of Victory") is a masterpiece of engineering and an enduring symbol of Arctic shipping. Her 75 000-horsepower nuclear engines and revolutionary spoon-shaped bow were designed to crush through sea ice up to three meters thick.



### Activities in the wild



#### Zodiac excursions

With our fleet of extremely capable landing craft, you will experience the Arctic wilderness and amazing wildlife of Franz Josef Land up close during shore excursions and Zodiac cruises.

#### Helicopter flights

One of the most memorable highlights of your North Pole cruise will be your time aboard the helicopter, flying over and alongside the icebreaker while it plows through the frozen Arctic Ocean.

#### Photography

The vast and ever-beautiful Arctic environment offers endless amazing photographic opportunities. With us, you will learn and practice your skills alongside an expert photographer.



#### BBQ on the ice

At the top of the world, you will disembark directly onto the ice to celebrate your achievement with new friends, delicious food and hot drinks at the world's northernmost BBQ feast.

#### Polar plunge

Also during your day at the North Pole, you will have a chance to demonstrate your bravery by jumping into the bone-chilling waters of the Arctic Ocean through a hole in the ice.

#### Polar bear viewing

Throughout the icy wilderness of Franz Josef Land and on the frozen seas all the way to the North Pole, you will have excellent opportunities to observe polar bears in their natural habitat.

### Activities on board

#### Engaging Presentations

Comprehensive interpretation of Arctic wildlife and polar exploration will be given by our expert naturalists, scientists and historians during riveting multilingual presentations and informal discussions on board. Our passionate staff are always on hand to make sure your expedition experience is educational as well as entertaining.



#### Engine room tour

During your voyage, you will have a once-in-a-lifetime opportunity to see the inner workings of a nuclear-powered icebreaker, one of the greatest engineering marvels of the nautical world. You will go deep inside the ship to see firsthand how atomic fission is harnessed to take you safely and cleanly through solid sea ice to the North Pole.



#### Open bridge

The captain welcomes you up to the spacious and quiet bridge, where you will learn how the behemoth vessel is skillfully navigated through the vastness of the frozen Arctic Ocean to the exact point of 90° North. You can come here anytime to look at maps, talk to the officers and enjoy commanding views of endlessly changing icescapes.



## Leisure



### Socialize at the bar

The warm and inviting Victory Bar is an excellent place to meet your fellow travelers and expedition staff for drinks and dancing to live music with panoramic forward-facing views.

### Work out in the sports hall

You can participate in active team sports such as basketball and volleyball in the sports hall or you can take advantage of exercise machines with breathtaking views of the polar wilderness outside.

### Chill out in the pool

Deep inside the ship, you will find a pool and two adjacent saunas perfect for relaxing after a day of exciting activities. A plunge in the pool while the ship is breaking ice is a unique experience.



### Relax in the library

The library is a comfortable, cozy space to enjoy some refreshments with a good book or a card game with friends. Here you can also participate in workshops led by our artist in residence.

### Stroll the outer decks

With several levels of open decks stretching along the length of the ship, you will have plenty of space to observe the beauty of the Arctic and to witness the ship's awesome icebreaking power.

### Enjoy fine dining

In the restaurant, you will enjoy fine wines and delectable contemporary cuisine freshly prepared by our talented chefs. The extensive menu is constantly rotated for an international culinary experience.

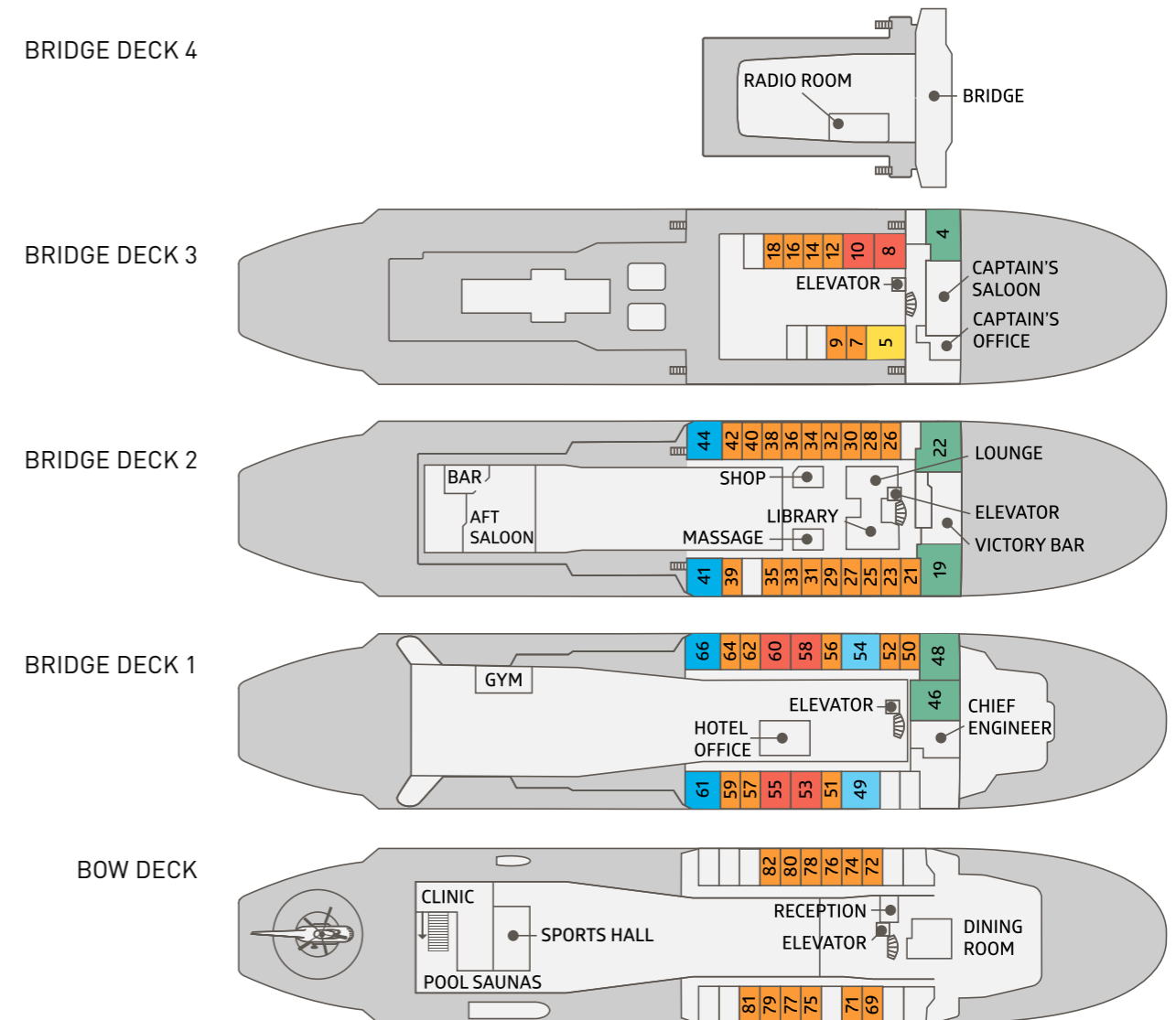
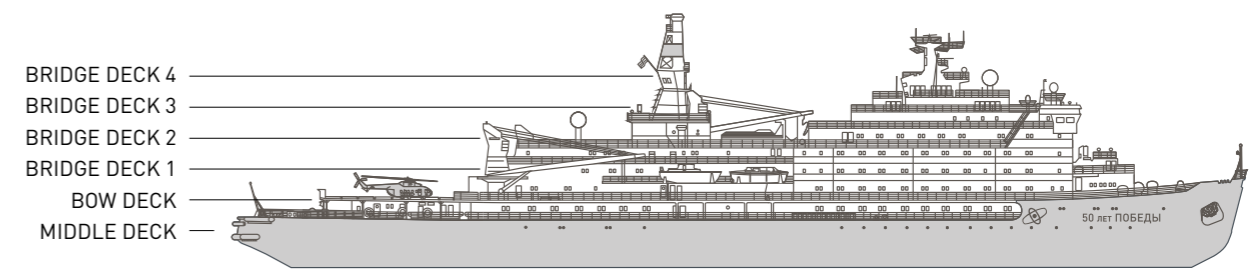


# Choose Your Cabin

## I/B 50 Let Pobedy

- Arktika Suite
- Victory Suite
- Grand Suite
- Junior Suite
- Mini Suite
- Standard Twin

Length:	160 meters (525 ft.)
Beam:	30 meters (98 ft.)
Speed:	21 knots
Passengers:	124
Crew:	140





### Arktika Suite

Size: 33 m<sup>2</sup>  
(355 ft<sup>2</sup>).

- Spacious bedroom and sitting room
- Single bed and a sofa bed
- Opening windows
- Lots of storage space
- Refrigerator and drip coffee maker
- En suite bathroom with a bathtub
- TV / DVD



### Junior Suite

Size: 24 m<sup>2</sup>  
(258 ft<sup>2</sup>).

- Bedroom and sitting room
- Single bed and a sofa bed
- Lots of storage space
- Opening windows
- En suite bathroom with a shower
- Refrigerator
- TV / DVD



### Victory Suite

Size: 28 m<sup>2</sup>  
(301 ft<sup>2</sup>).

- Spacious bedroom and sitting room
- Single bed and a sofa bed
- Opening windows
- En suite bathroom with a bathtub
- Refrigerator
- Lots of storage space
- TV / DVD



### Mini Suite

Size: 22 m<sup>2</sup>  
(237 ft<sup>2</sup>).

- Bedroom and sitting room
- Single bed and a sofa bed
- Lots of storage space
- Opening windows
- En suite bathroom with a shower
- Refrigerator
- TV / DVD



### Grand Suite

Size: 26-27 m<sup>2</sup>  
(280 ft<sup>2</sup>).

- Bedroom and sitting room
- Single bed and a sofa bed
- Lots of storage space
- Opening windows
- En suite bathroom with a bathtub
- Refrigerator
- TV / DVD



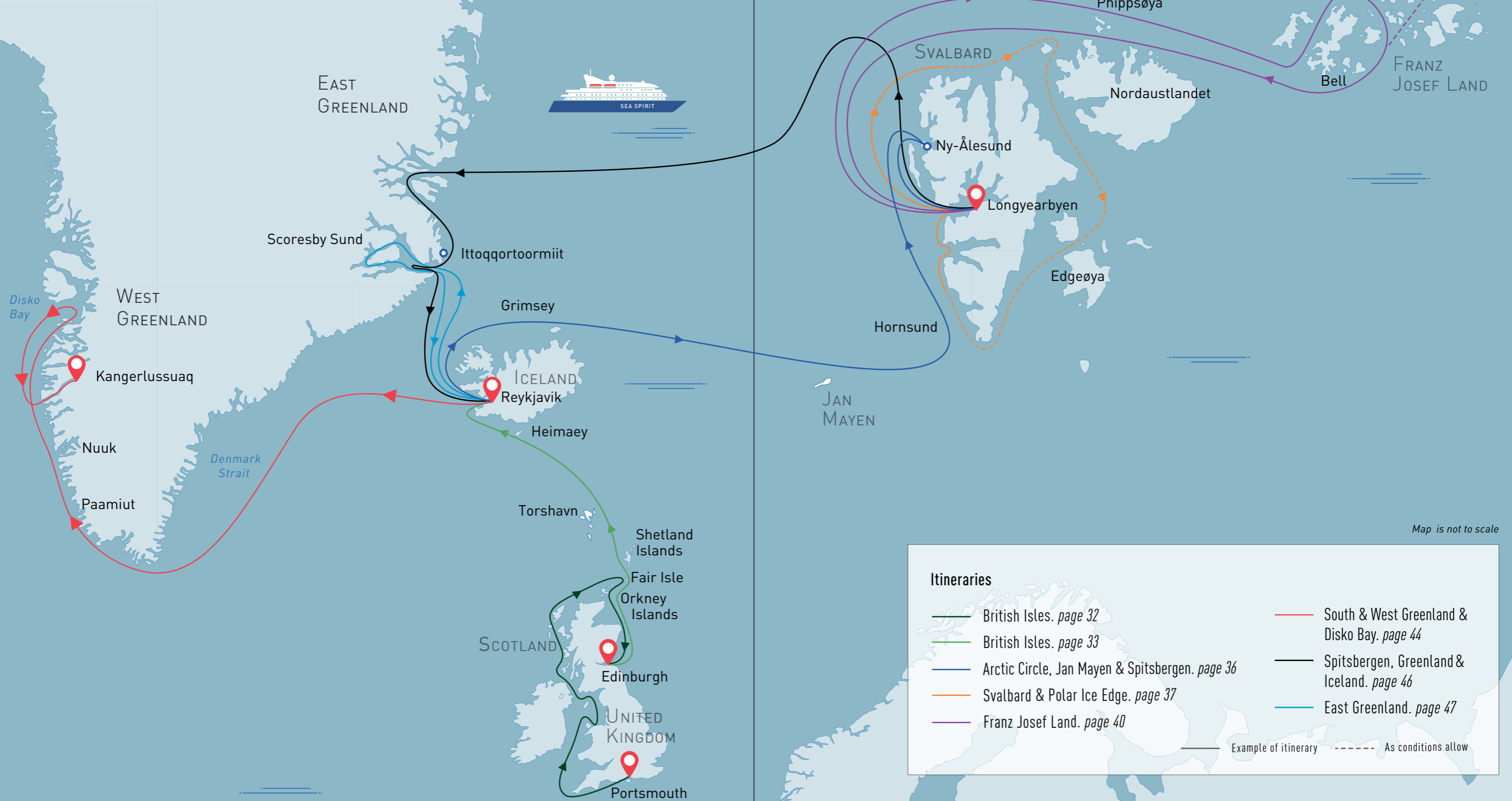
### Standard Twin

Size: 14 m<sup>2</sup>  
(151 ft<sup>2</sup>).

- Single bed and a sofa bed
- Opening windows
- En suite bathroom with a shower
- Refrigerator
- TV / DVD

# THE ARCTIC

ACROSS TIMELESS LANDSCAPES AND FROZEN SEAS, OUR ARCTIC VOYAGES COVER THE ESSENTIAL HIGHLIGHTS AND LITTLE-KNOWN SECRETS OF THE REGION.



Map is not to scale

## British Isles

ISOLATED ISLANDS AND DISTANT SHORES  
SURPRISE YOU WITH HIDDEN HISTORICAL  
TREASURES AND ENCHANTING BIRDLIFE.



# British Isles > Legendary History & Wild Nature



### Reasons to visit the British Isles with us:

- You can experience the highlights of Ireland and all four countries of the United Kingdom on one voyage.
- This is a unique opportunity to explore a variety of places accessible only by sea, including the remote islands of Staffa, Fair Isle and St Kilda.
- History buffs will admire medieval castles, Iron-Age brochs, Neolithic village sites and ancient henge monuments throughout the British Isles.
- You will visit numerous isolated seabird colonies and rare wildlife habitats best reached by sea.

<b>From</b> \$ 6 095	<b>When to go</b> May 8 - May 20, 2022	<b>Duration</b> 13 Days	<b>Included activities</b> 	<b>Adventure options</b> 
-------------------------	---	----------------------------	--------------------------------	------------------------------



# British Isles > Viking Odyssey



### Reasons to visit the British Isles with us:

- Follow in the wake of the intrepid Vikings, whose influence during the Middle Ages can be seen on all the islands visited during this unique westbound voyage.
- Pause in the northern Scottish isles of Orkney and the Shetlands, and see remnants of Neolithic cultures, centuries-old sheep communities, and diverse migratory birdlife.
- Explore the unspoiled Faroes, an emerald archipelago remotely situated in the North Atlantic where natural beauty reigns supreme.

<b>From</b> \$ 4 395	<b>When to go</b> May 19 - May 28, 2022	<b>Duration</b> 10 Days	<b>Included activities</b> 
-------------------------	--	----------------------------	--------------------------------





## Svalbard

THE FULL RANGE OF ARCTIC WILDLIFE  
GREETES YOU IN A POLAR WILDERNESS  
OF OUTSTANDING BEAUTY AND ABUNDANCE.

## Crossing the Arctic Circle, Jan Mayen & Spitsbergen > Three Pearls of the Arctic



### Reasons to cross the Arctic Circle with us:

- Spend a day in the Icelandic capital city of Reykjavik, then explore the more remote, less-visited Westfjords and rugged island of Grimsey on the Arctic Circle.
- Be one of the few to visit Jan Mayen Island in the Arctic Ocean, home to the Beerenberg volcano, a Norwegian weather station and tens of thousands of breeding seabirds.
- Enjoy four full days exploring Spitsbergen, with our expedition team on constant lookout for polar bears, walrus, whales, seals and teeming seabird colonies.

**From** \$ 5 395  
**When to go** Jun 23 - Jul 4, 2022

**Duration** 12 Days

**Included activities**  




## Svalbard & Polar Ice Edge > Best of Svalbard



### Reasons to circumnavigate Svalbard with us:

- In addition to the highlights of West Spitsbergen, this extraordinary adventure will show you an even wilder side of Svalbard on an attempted circumnavigation.
- You will travel deep into the realm of polar bears, walrus, seals, whales, reindeer and Arctic fox.
- Ice conditions are favorable for exploring Svalbard's least-visited and most rewarding spots, featuring bird cliffs and ice caps.
- Hikers will enjoy remote beaches, tundra meadows, polar deserts and glaciated mountain landscapes.

**From** \$ 7 495  
**When to go** Jul 3 - Jul 13, 2022 / Jul 12 - Jul 23, 2022

**Duration** 11-12 Days

**Included activities**  

**Adventure options**  

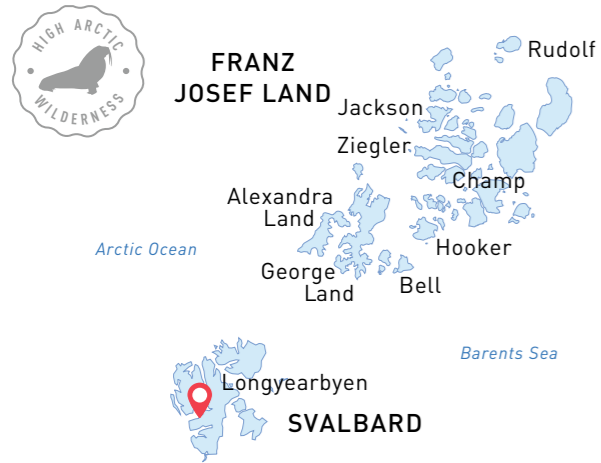



# Franz Josef Land

A WILDLY REMOTE RUSSIAN ARCHIPELAGO  
INVITES YOU TO VENTURE OFF THE MAP  
IN THE LAST UNEXPLORED ARCTIC FRONTIER.



# Franz Josef Land Archipelago > The Unexplored Frontier



## Reasons to explore Franz Josef Land with us:

- This is a rare opportunity to explore an enigmatic High Arctic archipelago previously closed to tourism.
- You will explore scenic fjords and icy seas, home to polar bears, walrus and rare bowhead whales.
- Fans of Arctic exploration will marvel at the campsites of Fridtjof Nansen and other legendary explorers from the Heroic Age of Discovery.
- You will discover a primeval polar wilderness of incomparable beauty and isolation, rich with unique geological wonders such as giant stone spheres.

From	When to go	Duration	Included activities	Adventure options
\$ 10 695	Jul 22 - Aug 4, 2022 / Aug 3 - Aug 16, 2022 Aug 15 - Aug 28, 2022	14 Days		





# Greenland

ICE AGE CREATURES WELCOME YOU  
TO A TIMELESS WORLD OF TRANSCENDENT  
LANDSCAPES AND NORTHERN LIGHTS.

## South & West Greenland and Disko Bay > Welcome to the Land of Vikings



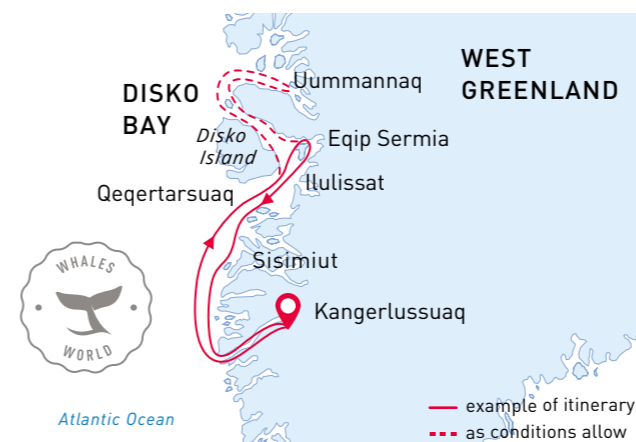
### Reasons to enjoy South & West Greenland with us:

- Experience firsthand the largest collection of Greenlandic icebergs in Ilulissat, where massive glaciers calve 20 million tons of ice per day.
- Learn about Inuit culture and dog sledding in remote fishing villages, beautifully set against majestic basalt mountains.
- Be as active as you wish – hiking, kayaking – or just relax amidst this pristine Arctic paradise.

From	When to go	Duration	Included activities	Adventure options
\$ 6 095	May 27 – Jun 7, 2022 / Jun 14 – Jun 24, 2022	11-12 Days		



## West Greenland and Disko Bay > Icebergs, Whales & Inuit Heritage



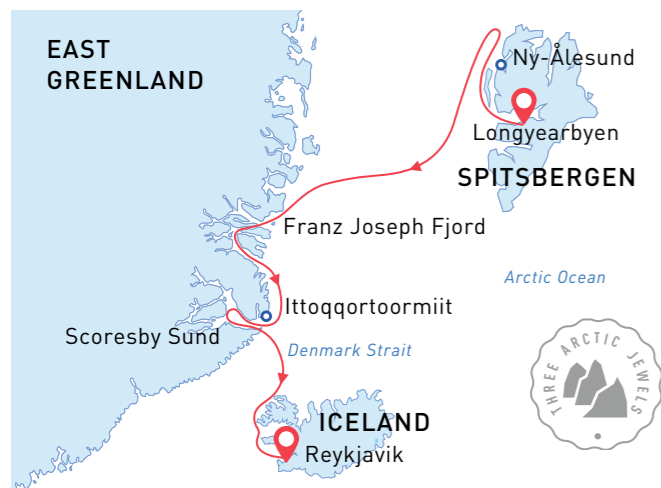
### Reasons to enjoy West Greenland and Disko Bay with us:

- An opportunity to learn about Greenlandic Inuit culture and local traditions first-hand.
- Dazzling scenery and natural wonders including Ilulissat's world-famous Icefjord.
- Humpback, fin, and minke whales encountered in their summer environs.

From	When to go	Duration	Included activities	Adventure options
\$ 4 695	Jun 7 – Jun 14, 2022	8 Days		



## Spitsbergen, Greenland & Iceland > Arctic Odyssey



### Reasons to take an Arctic Odyssey with us:

- You will get the full Arctic experience on this adventurous expedition, complete with polar landscapes, historical sites and indigenous culture.
- Wildlife lovers will appreciate seeing the Arctic's most iconic animals, including Arctic hare and herds of muskoxen.
- In addition to the scenic wonders of Scoresby Sund, you will discover the vast and untamed wilderness of Northeast Greenland National Park and Iceland's charming Snæfellsnes peninsula.

**From** \$ 9 395  
**When to go** Aug 27 - Sep 9, 2022

**Duration** 14 Days

**Included activities**

**Adventure options**



## East Greenland > Arctic Sights & Northern Lights



### Reasons to enjoy East Greenland with us:

- An in-depth exploration of remote Scoresby Sund, perhaps the world's most pristine and scenic fjord system, in the wild heart of Greenland.
- Towering, snow-covered mountains, massive tidewater glaciers, cathedrallike icebergs and resplendent tundra – a photographer's paradise.
- Ancient Thule settlement sites, historic huts and the modern Inuit village of Ittoqqortoormiit.

**From** \$ 6 595  
**When to go** Sep 8 - Sep 18, 2022 / Sep 17 - Sep 27, 2022

**Duration** 11 Days

**Included activities**

**Adventure options**



# THE ANTARCTIC

FROM PRISMATIC WORLDS OF ICE TO UNRIVALED WILDLIFE SPECTACLES, OUR ANTARCTIC VOYAGES COVER ALL THE BEST ASPECTS OF THE LAST DISCOVERED CONTINENT.



# Antarctic Peninsula

WILD ADVENTURES AND ABUNDANT  
MARINE MAMMALS AWAIT YOU IN THE  
REALM OF PENGUINS AND ICEBERGS.

## Antarctic Peninsula > Realm of Penguins & Icebergs



### Reasons to experience Antarctica with us:

- You will be astounded by rugged mountains, cascading glaciers, crystalline icebergs and clear waters abounding with whales and seals.
- Birders will enjoy the endlessly entertaining antics of countless penguins and endemic Antarctic birdlife.
- Your inner adventurer will be awakened during epic days of kayaking and a night of camping under the southern stars in a world of ice and snow.
- The secrets of Antarctica's past, present and future are revealed at historical sites and research bases.

From	When to go
\$9 395	Nov 30 – Dec 11, 2022 / Dec 10 – Dec 20, 2022 Dec 19 – Dec 30, 2022 / Dec 29 – Jan 8, 2023 Feb 8 – Feb 19, 2023 / Feb 18 – Mar 1, 2023

Duration	Included activities	Adventure options
11-12 Days		





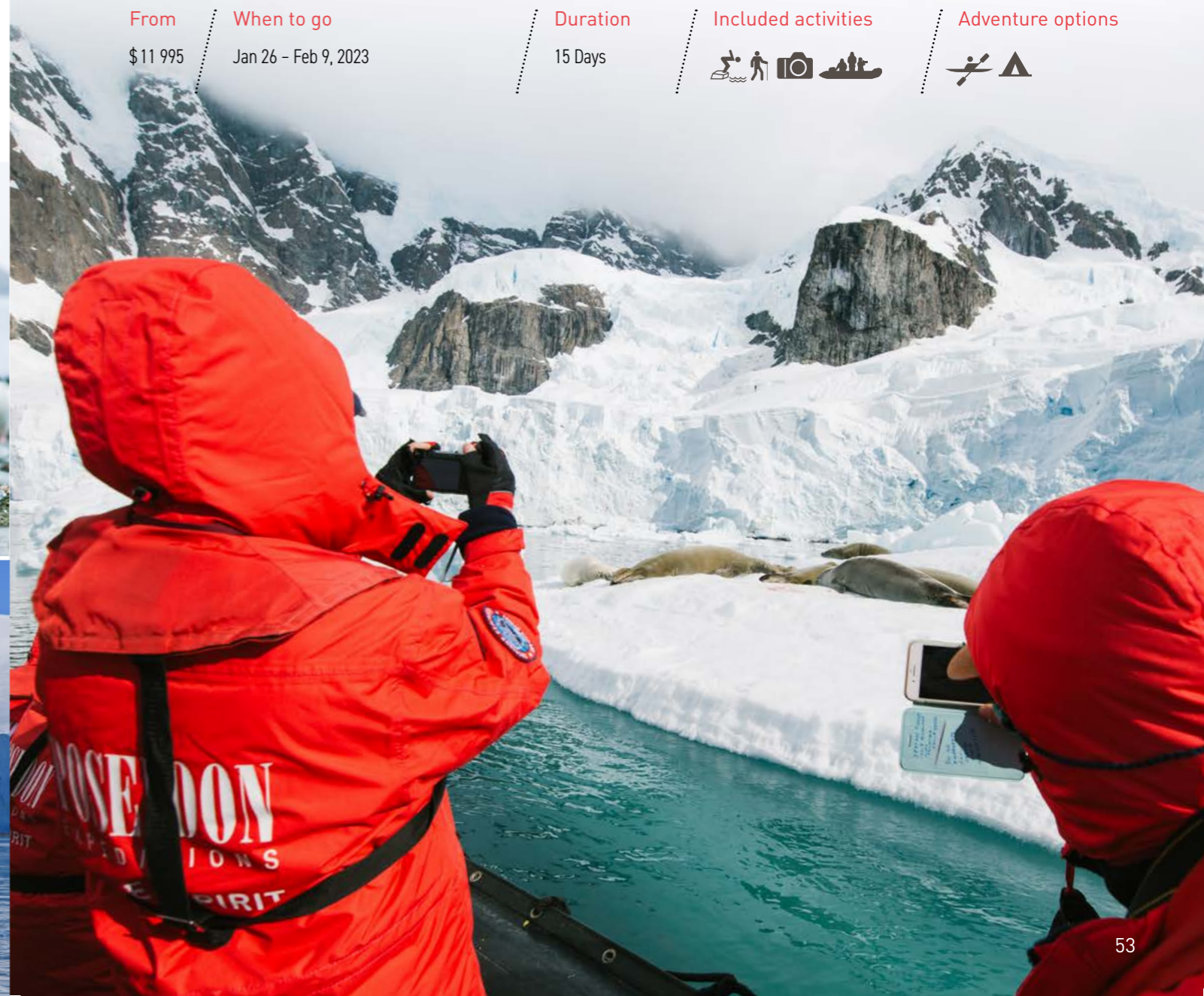
## Antarctic Circle > Crossing 66° South Latitude



### Reasons to cross the Antarctic Circle with us:

- You will spend more quality time on the Antarctic Peninsula while exploring the remote realm of mountains and ice south of the Antarctic Circle.
- Wildlife drama occurs before your eyes as fluffy penguin chicks enter a world of predatory leopard seals, killer whales and south polar skuas.
- Humpback whales are especially abundant now at the height of the summer feeding frenzy.
- Adventurers pursuing geographical extremes will be proud to go where very few people have gone before.

From	When to go	Duration	Included activities	Adventure options
\$11 995	Jan 26 – Feb 9, 2023	15 Days		



# South Georgia and Falkland Islands

COUNTLESS WILD VOICES CALL YOU FROM  
ACROSS THE SOUTHERN OCEAN TO THEIR  
BEAUTIFUL AND BOUNTIFUL ISLANDS.



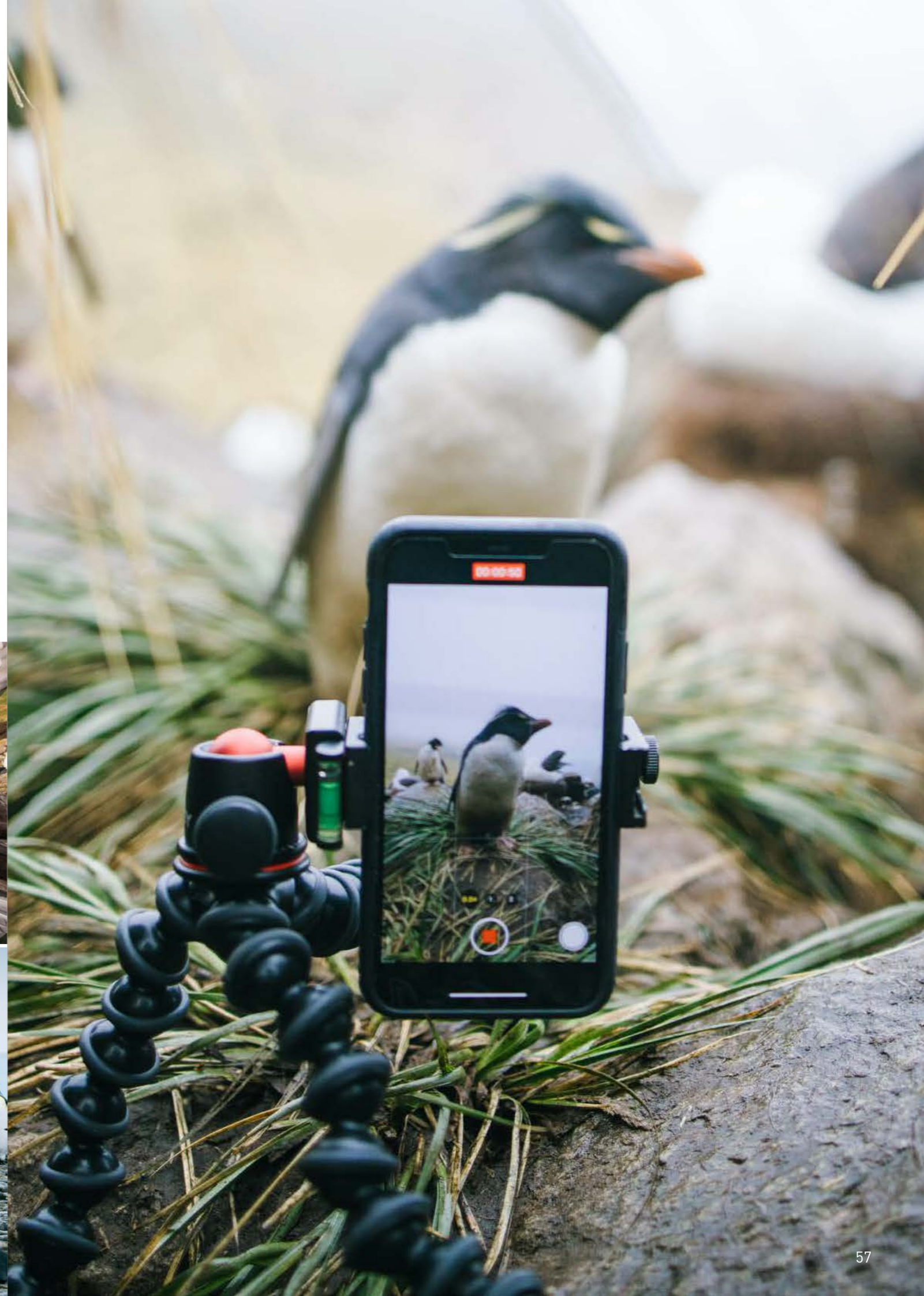
## Falklands, South Georgia & Antarctica > Antarctic Wildlife Adventure



### Reasons to see the Southern Ocean with us:

- You will experience the legendary wilderness of South Georgia, home to the greatest concentrations of seabirds and marine mammals on the planet.
- Penguin lovers will rejoice in the astounding abundance of penguins at huge breeding colonies throughout this three-week wildlife extravaganza.
- A rare and intimate view of albatross family life can be found in the beautiful Falkland Islands.
- You will encounter fearless marine wildlife and scenery beyond belief on the Antarctic Peninsula.

From	When to go	Duration	Included activities	Adventure options
\$13 395	Oct 21 - Nov 12, 2022 / Nov 11 - Dec 1, 2022 Jan 7 - Jan 27, 2023 / Feb 28 - Mar 22, 2023	21-23 Days		





## Sea Kayak Club

As a member of our Sea Kayak Club, you can experience the thrill and tranquility of kayaking in the Polar Regions as part of a small, expertly guided paddling group. Join us as we explore coastlines and remote islands where very few kayakers have paddled before.

Enjoy magnificent scenery, glittering brash ice, and unique marine wildlife from our comfortable,

stable and stealthy sea kayaks. Escape the ordinary and immerse yourself in the serenity of true polar.

This is an optional activity with limited availability. If you enjoy sea kayaking, then don't miss your chance to paddle one of the sport's most rewarding destinations. Sign up for kayaking and discover the polar paradise of your dreams!



## Antarctica Camping

In our Antarctica camping program, you can slow down and settle in with the awesome sights and mysterious sounds of the White Continent with the benefit of our warm and comfortable camping gear.

Witness the drama of endlessly changing light upon the landscape as icebergs crack and glaciers groan under the weight of the gathering night. Capture that

perfect photo of a moonlit snowscape and fall gently to sleep while appreciating your connection to Heroic Age explorers and modern-day polar adventurers.

This is an optional activity with limited availability. Don't miss your chance to spend a memorable night out on the snow and ice. Sign up for camping and gain undeniable bragging rights!



## Aboard M/V Sea Spirit

*An ideal vessel for the polar regions, the nimble Sea Spirit features an ice-strengthened hull, a fleet of Zodiac landing craft, ample deck space for wildlife viewing, and state-of-the-art Rolls-Royce stabilizers for smoother sailing.*





## Included activities in the wild



### Zodiac landings

One of the hallmarks of real expedition cruising is the ability to go ashore via Zodiac in remote locations far from tourist facilities and crowds. During wild landings, you will experience pristine nature, famous wildlife breeding areas and poignant historical sites with our expert naturalists and historians.

### Photography

From portraits of charismatic polar bears to wide-angle vistas of glaciated mountain ranges, the wildlife and landscapes of the polar regions are among the most photogenic in the world. Our staff photographer will be available to help you make the most of this bounty in your viewfinder.



### Zodiac cruising

Our dependable fleet of agile Zodiac boats are deftly maneuvered by our professional polar guides, who provide natural history interpretation while getting you safely within camera distance of unique marine wildlife and beautiful ice features such as glaciers and icebergs.

### Guided tours

Whenever we visit developed areas, you will gain insights and first-hand knowledge from local guides on excursions to landmarks of the greatest historical and cultural significance. On cruises to Greenland, you will learn about Greenlandic culture and subsistence lifestyle at a local village.



### Wildlife watching

The Arctic and Antarctica are famous for wildlife. You will have the opportunity to observe a wide range of mammals and seabirds exhibiting fascinating wild behaviors in their natural environment.

### Hiking

For the active nature lover, we offer guided small-group hiking excursions into the polar wilderness. You will enjoy outstanding scenery and a close connection with wild nature.

### Polar plunge

While you are soaking up the polar environment, you can soak yourself in a polar sea. Taking a plunge in the bracing waters of the Arctic or Antarctica will leave you breathless.



## Activities on board

### Lectures

Our lecture team includes prominent scientists, conservationists, marine biologists, ornithologists, polar historians, geologists and sea ice experts. Through a series of engaging multimedia presentations, the secrets of the polar worlds will be revealed.



### BBQ on deck

One of the many culinary highlights of your cruise will be a delicious BBQ served on the spacious outer decks. You will enjoy a sumptuous feast while admiring panoramic views of gorgeous polar scenery with the chance to spot marine wildlife from your table.



### Open bridge

Sea Spirit has an open bridge policy, which means you are welcome to visit during normal operations. The bridge is a quiet place to witness the navigation of the ship. From here you will also enjoy a great vantage of the route and any wildlife in the waters ahead.

## Leisure



### Socialize in the lounge

The Club Lounge offers comfortable indoor seating for socializing and observing fantastic landscapes passing by. After hours, you can also enjoy lounge music and polar-themed cocktails.

### Exercise in the gym

Our gym allows you to maintain your daily workout routine with fitness machines and free weights while admiring seascapes and seabirds through a picture window.

### Relax in the Jacuzzi

Whether alone or with friends, our large outdoor Jacuzzi is a great place to relax while cruising among icebergs and glaciers. You will especially enjoy a hot soak after your polar plunge.



### Escape to the library

The library is a cozy place for reading and relaxation. Here you will find an extensive selection of polar books and DVDs, table games, magazines, reference materials and newspapers.

### Stroll the open decks

Panoramic open-air decks provide plenty of space for observing fantastic polar scenery. You can also spot marine mammals and seabirds with the help of our professional naturalists.

### Enjoy fine dining

Delicious international cuisine is prepared by our talented chefs and served in our elegant restaurant. You can also enjoy a hot meal and stunning views at our outdoor bistro on the aft deck.

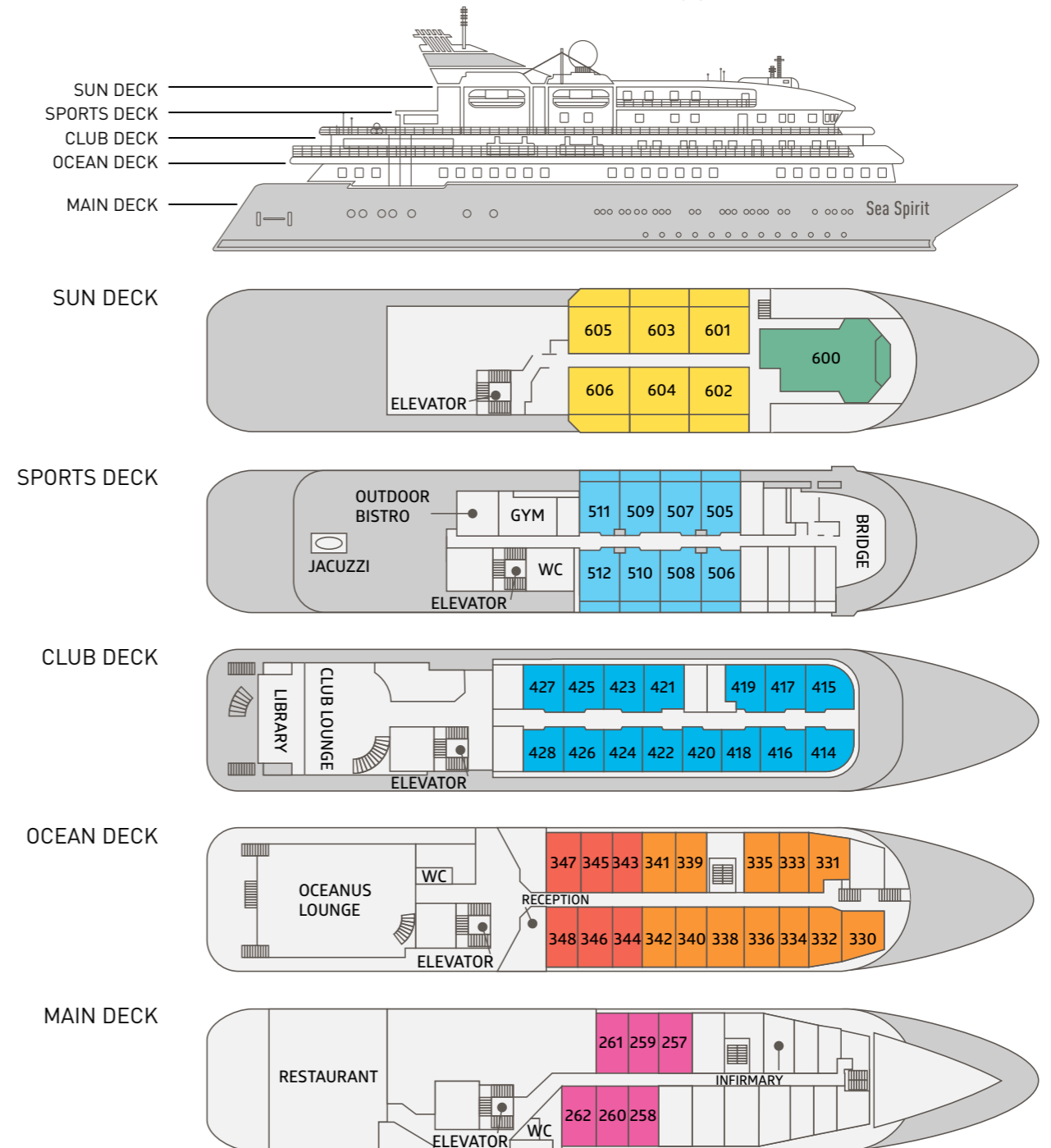


# Choose Your Cabin

## M/V Sea Spirit

- Owner's
- Classic
- Premium
- Triple
- Deluxe
- Main Deck
- Superior

Length:	90.6 meters (297 ft.)
Beam:	15.3 meters (50 ft.)
Speed:	15 knots
Passengers:	114
Crew:	72

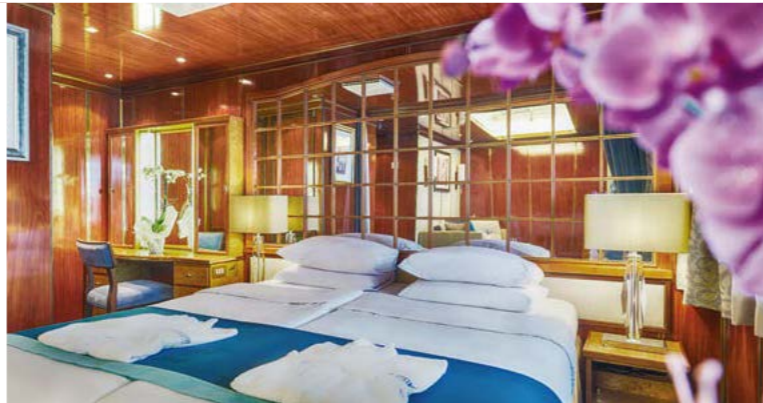




### Owner's Suite

Size: 43 m<sup>2</sup> (463 ft<sup>2</sup>).

- Spacious lounge area with bar, kitchenette, dining table and a comfortable sofa bed
- King size bed
- Huge walk-in closet
- Private forward deck above the Bridge
- BOSE stereo system and HD plasma TV
- En suite bathroom with jetted bathtub
- In-room safe
- Satellite telephone



### Premium Suite

Size: 30 m<sup>2</sup> (323 ft<sup>2</sup>).

- Bedroom area with boudoir
- Lounge area with comfortable sofa bed
- Bathrobe, slippers, toiletries and hair dryer
- Twin beds or one queen size bed
- TV / DVD
- Private balcony
- Two spacious wardrobes
- En suite bathroom with shower
- Mini bar and in-room safe
- Satellite telephone access



### Deluxe Suite

Size: 24 m<sup>2</sup> (258 ft<sup>2</sup>).

- Bedroom area
- Lounge area with comfortable sofa bed
- Private balcony
- Twin beds or one queen size bed
- TV / DVD
- Bathrobe, slippers, toiletries and hair dryer
- Spacious wardrobe or walk-in closet
- En suite bathroom with shower
- Mini bar and in-room safe
- Satellite telephone access



### Superior Suite

Size: 20 m<sup>2</sup> (215 ft<sup>2</sup>).

- Bedroom and lounge area with a sofa
- Spacious wardrobe or walk-in closet
- Bathrobe, slippers, toiletries and hair dryer
- Twin beds or one queen size bed
- En suite bathroom with shower
- Picture window to the outside deck
- TV / DVD
- Mini bar and in-room safe
- Satellite telephone access



### Classic Suite Triple Suite

Size: 21 m<sup>2</sup> (226 ft<sup>2</sup>).

- Bedroom area
- Lounge area with comfortable sofa bed
- Bathrobe, slippers, toiletries and hair dryer
- Twin beds or one queen size bed
- En suite bathroom with shower
- Mini bar and in-room safe
- Spacious wardrobe
- Picture window
- TV / DVD
- Satellite telephone



### Main Deck Suite

Size: 23 m<sup>2</sup> (248 ft<sup>2</sup>).

- Bedroom area
- Lounge area with comfortable sofa bed
- Bathrobe, slippers, toiletries and hair dryer
- Twin beds or one queen size bed
- En suite bathroom with shower
- Mini bar and in-room safe
- Spacious wardrobe
- Two or three portholes
- TV / DVD
- Satellite telephone access



Hotel Arakur

## Pre-departure Hotels

Reservations at a quality hotel on the night before embarkation are included on all our polar cruise itineraries. Breakfast at the hotel is also included. You will have a chance to explore the city before taking your free group transfer to the ship, where we will welcome you aboard.

### Arakur Resort & Spa ★★★★★

Ushuaia, Argentina

On Antarctic cruises starting in Ushuaia, you will stay at the luxurious Arakur Resort & Spa, located in Cerro Alarkén Natural Reserve. Spacious rooms offer the latest technology, exquisite furnishing and panoramic views. The resort features several pools, a fitness center and La Cravia restaurant.

### Grand Hotel ★★★★★

Reykjavík, Iceland

Guests on our East Greenland cruises will stay at the stylish Grand Hotel Reykjavík, featuring superior rooms and first-class facilities for discerning travelers. Leisure options include an exclusive spa and fitness center. The elegant Grand Brasserie offers Icelandic seafood and international dishes.

### Radisson Blu Polar Hotel ★★★★★

Longyearbyen, Spitsbergen

On High Arctic cruises starting in Longyearbyen, you will stay at the Radisson Blu Polar Hotel, featuring warm and cozy rooms with all the modern amenities. Deluxe facilities include a sauna and outdoor hot tubs. Arctic specialties and international cuisine are served at the Nansen Restaurant.

### Azimut Hotel ★★★★★

Murmansk, Russia

Adventurers going to the North Pole with us will stay at the trendy AZIMUT Hotel, located in the heart of Murmansk in the tallest building north of the Arctic Circle. The modern hotel offers smartly designed rooms, a fitness center, various dining options and excellent views from the top-floor Sky Bar.

## Polar Fashion: Our Expedition Parka



Patches, depending on the region

Belgian NorthSea outer layer is water-resistant, windproof and breathable

Life jacket

Inner layer is luxuriously soft, warm and breathable

Fleece cuffs are designed specifically to keep your hands warm without gloves



### Muck Boots Arctic Sport

We provide Wellington-style rubber boots for the duration of the voyage. You will be able to try on the boots and find a suitable size on board at the beginning of your voyage with us. We have the following size ranges on board: US: 4-13, EURO: 35-47, UK: 3-12





## Passenger Reviews

Trustpilot is an independent review platform where you can read genuine feedback from our discerning passengers. We are proud to have received an average score of 4.9 out of 5.



### Raymond & Nivin, UK

My husband and I have been on 2 cruises with Poseidon - Antarctica in 2018 and the Arctic in 2019. Both expeditions were amazing, exciting, enjoyable and informative. We loved the variety of trips we made off the ship in the zodiacs. We saw many different types of wildlife, visited research stations, saw plants unique to the regions, beautiful icebergs and went through the ice with the zodiacs. Every day, there were talks on a variety of topics, which was another aspect to the trips that was both enjoyable and educational.

### Erich, United States

I had been aware of the opportunity to travel to the North Pole on a Russian nuclear icebreaker for about four years. Finally, I went with my son, who is in his mid-twenties, and we loved it. We saw at least a dozen polar bears, and in two cases, they approached right to the ship, one time with a cub. We also saw walrus from the Zodiac. The basaltic

columns covered with birds at Rubini Rock were amazing. At the pole, we especially enjoyed swimming (the "polar plunge") and a short hike. A baby seal climbed out of our swimming hole! My son had fun doing some Citizen Science with Lauren and Alex. Seeing the ship from the ice was very impressive.

### Jean-Claude, Belgium

For the second time, we booked a trip with Poseidon Expeditions. Our first experience on board of the *M/V Sea Spirit*: an extraordinary cruise to Franz Josef Land. A true exploration in a pristine wilderness. Super accommodation in spacious suites; excellent international cuisine. In short, we are ready have new experiences with Poseidon Expeditions.



### Richard, Malaysia

My 3rd expedition with Poseidon on the *Sea Spirit* to Svalbard proved to be as exciting as the first two. Polar bears on the hunt were the main feature. The people with giant lenses that extended almost to the polar bears themselves

shared super close-up films and photos of the chase when it was either too far away for my zoom lens, or our Zodiac was not in position to catch the footage. The final score was Seals & Reindeer 2, Polar bears 0. I was cheering for the seals and reindeer.



### Michelle, United States

This was the first expedition for the *Sea Spirit* around the UK. The team of experts and expedition leader were top notch. The *Sea Spirit* is a fantastic ship - I cannot say enough about it - the suites are elegant, spacious, and so comfortable compared to others I have been on. The trip was run very professionally and always with safety in mind. The food was superb. We really enjoyed the countries and islands that we visited. All-in-all - excellent!



## High Latitudes Loyalty Program

To express our appreciation to our loyal travelers, we created the Polar Circle Card. Returning guests can take advantage of discounts, upgrades, onboard benefit packages and more. The savings and benefits increase with the number of trips taken with us. Cards are transferable, allowing you to help your friends and family on their way to achieving their polar dreams.



### 66° High Latitude

for your 2<sup>nd</sup> trip with Poseidon Expeditions

- \$350 USD discount
- Complimentary beverage package — wine or beer — for lunch and dinner

### 80° High Latitude

for your 3<sup>rd</sup> trip with Poseidon Expeditions

- \$450 USD discount
- Complimentary beverage package — wine or beer — for lunch and dinner
- Complimentary one-suite upgrade (subject to availability)



### 90° High Latitude

for your 4<sup>th</sup> trip with Poseidon Expeditions

- \$650 USD discount
- Complimentary beverage package — wine or beer — for lunch and dinner
- Complimentary one-suite upgrade (subject to availability)
- Complimentary laundry service while aboard
- Complimentary pre-cruise private car transfer from the airport to the hotel



\* More details about the Loyalty Program are available at [poseidonexpeditions.com](https://poseidonexpeditions.com).

# Terms and Conditions

## Expedition cruise aboard I/B 50 YEARS OF VICTORY

By purchasing this product, you accept the present Terms and Conditions. In case you do not accept any of the Terms and Conditions of Poseidon Arctic Voyages Ltd. d.b.a. Poseidon Expeditions (Operator hereafter) you will not be able to take part in the expedition cruise.

**1. Rates and Accommodation.** Cruise rates are quoted per person and based on passengers sharing a cabin.

Cabin share is available only in Standard Twin cabin.

Single accommodation in Standard Twin cabin: 1.7x the shared rate; Single accommodation in Mini Suite, Junior Suite, Grand Suite, Victory Suite and Arktika Suite: 2x the shared rate.

Those who booked shared accommodations aboard the ship will also share accommodations at the pre-cruise hotel, if applicable.

**2. Reservations and Payment.** A deposit of 20% of the appropriate cabin rate is required to confirm the reservation; the final payment (80%) is due 90 days prior to the departure. All payments are to be made in the agreed currency indicated on the invoice. The deposit can be made by credit card or via bank transfer. The final payment is to be made via bank transfer. North America office also accepts credit cards and checks for deposit and final payment.

**3. Payment Delay.** The date of payment is considered to be the date of crediting the funds to the account of Operator.

In case of payment delay Operator has the right to apply payment delay fee which equals to 0.1% from the due amount for each day of delay.

**4. Booking Cancellation/Refunds.** All requests for cancellation must be made in writing. Reservations cancelled more than 120 days prior to departure will be fully refunded less an administrative fee of 5% of the offered rate. Reservations cancelled between 119 days and 91 days prior to departure will be fully refunded less the deposit of 20% of the offered rate.

In case a reservation is cancelled 90 days and less prior to departure, all payments are forfeited (cancellation fee is 100%). For these and other reasons mentioned below, passengers are strongly encouraged to obtain trip cancellation insurance.

The services included in the cruise rate are based on group participation, and no refunds will be made for any part of the program in which passengers choose not to participate, including any helicopter flight time. It should be understood that refunds will not be made to passengers who do not complete the tour for any reason whatsoever.

**5. Voyage Cancellation.** Operator reserves the right to cancel any departure due to insufficient reservations up to eight weeks before the date of departure (passengers may be offered alternative cruise dates). Operator also reserves the right to cancel any departure up until the date of that departure due to force majeure or other circumstances beyond the control of Operator that prevents the operation of the tour [this also includes governmental and administrative decisions].

In the very unlikely event that a voyage is cancelled prior to departure Operator will provide a full refund of all funds paid to Operator. Should a voyage cancel while in progress, Operator will provide a pro-rated refund of the funds paid to Operator.

Operator or its agents are not responsible for any costs or penalties relating to air transport or other services that are cancelled. Operator is not liable for failure to provide the services or accommodations offered to the

extent that such services or accommodations cannot be provided due to force majeure or other circumstances beyond its control.

**6. Transferred reservations/name changes.** Bookings transferred from one departure (more than 90 days prior to departure) to another, for the same passenger can be made at no charge, based on availability. The transfer of the booking to another departure can only be made once. After the transfer is completed, the general cancellation terms are not applicable to the new departure date and the transferred deposit is non-refundable.

By direct permission, and on a limited basis, name changes on a reservation can be made at a fee of USD 300 per person, but not less than 90 days before the departure.

**7. Children.** Children must be at least 12 years of age to participate in an expedition cruise. However, Operator may accept children ages 8-11 on a case by case basis after additional consideration by the Operator.

**8. On-board language.** All voyages are conducted in English and German. For groups of passengers speaking other languages, Operator recruits multi-lingual staff members, who assist the passengers during briefings and lectures. Staff varies from voyage to voyage; please check when booking.

**9. On-board authority.** All passengers are subject to instructions or regulations given by the Captain or the Expedition Leader.

**10. On-board payments.** All payments are in US dollars. Passengers may run a tab which must be paid prior to disembarkation. Payments can be made in cash or via credit card.

**11. Itinerary.** The itineraries published on the Operator's website and in any other sources serve as examples only. Real itineraries of any expedition cruise (including all scheduled landings and excursions) in polar regions are heavily dependent on weather and ice conditions. Occasionally, conditions and/or safety concerns require itinerary changes. The Captain and the Expedition Leader will accordingly make every effort to find the best alternative to the original itinerary while keeping passengers informed and updated. It is understood that such decisions will be made in the interests of all passengers aboard and with regard to the safety of the vessel. Itinerary changes are not subject to passenger approval/consent and in the event of such a change no refunds or price adjustments are possible. Nothing in this Itinerary is meant to signify the use of any specific design or model of helicopter.

Operator expressly reserves the right to change the itinerary, the date or place of departure due to weather conditions, availability of anchorages, political conditions and other factors beyond Operator's control without consulting the participants. Placement of a booking with Operator amounts to an acknowledgement that itinerary changes are possible.

**12. Photography/Video.** Operator reserves the right to use photographs and/or videos taken during the operation of the voyage for promotional purposes for the Operator and/or its sales agents. Passengers may not charge for their appearance in any photographs or video.

**13. Smoking.** Smoking in cabins or public areas of the ship is strictly prohibited by safety regulations. There will be a designated smoking place aboard the ship.

**14. Alcohol.** Alcohol beverages are available for sale in the on-board bar. Operator reserves the right to refuse alcohol to anyone deemed to be intoxicated.

**15. Eligibility.** There are no specific physical

requirements for travel in polar regions. However, the purchased expedition cruise is a cruise to the remote region of the world on a ship which, at times, may be in rough seas. Please also note that there is no specialized medical assistance available in these regions. Passengers with certain medical/health issues may not be appropriate for this type of expedition and are advised to exercise appropriate caution. Our medical information form lists a number of these conditions.

**16. Pre-departure forms.** Prior to boarding, specific passenger information is required by Operator for passenger safety and for international reporting regulations. Required information must be completed in the forms provided by Operator and submitted at least 60 days prior to departure. Final documents cannot be issued for passengers whose information has not been received.

**17. Personal information.** Please be advised that in order to embark the nuclear-powered icebreaker "50 Years of Victory", the passenger is issued a special permit by the Operator. This permit requires that individual passport details be submitted to the Operator by the passenger. When boarding the vessel, the passenger must present the same passport as previously provided to the Operator. Otherwise, the passenger will not be able to participate in the cruise. In this case, the cost of the cruise will not be refunded. Any changes in passport details (in particular, when a new passport was issued) must be submitted to the Operator no later than 45 working days prior to the cruise departure date.

**18. Passenger Medical Information.** We require all passengers to submit basic medical information prior to departure. Upon receipt of that basic medical information, specific physical conditions may necessitate additional documentation from a passenger's physician certifying fitness to travel on a polar expedition voyage. If additional medical confirmation is requested, boarding will not be allowed absent receipt of that confirmation. Operator has a pregnancy policy that women are welcome with explicit doctor's permission and having signed a specific waiver. Pregnancy policies of carriers (ship owners, airlines, bus companies, hotels, etc.) may also apply. Please note that medical information will, of necessity, be available to designated Operator's staff.

**19. Important Notice:** Please be advised that prospective passengers must carefully consider whether their health condition is adequate for participation in the expedition cruise taking place in remote and hard-to-reach regions, where emergency evacuation is not always available. Passengers must complete the provided medical information form and provide the Operator with permission from their physician in case of serious or chronic medical conditions. If the passenger decides to participate in the cruise in spite of a medical condition and/or the concerns of their physician and their condition deteriorates while aboard, requiring emergency evacuation that the passenger's insurance company does not recognize as appropriate and/or legitimate, all evacuation expenses will be borne by the passenger. Operator has a pregnancy policy that women are welcome with explicit doctor's permission and having signed a specific waiver. Pregnancy policies of carriers (ship owners, airlines, bus companies, hotels, etc.) may also apply. Please note that medical information will, of necessity, be available to designated Operator's staff. Operator has a pregnancy policy that women are welcome with explicit doctor's permission and having signed a specific waiver. Pregnancy policies of carriers (ship owners, airlines, bus companies, hotels, etc.) may

also apply. Please note that medical information will, of necessity, be available to designated Operator's staff. Please note that regardless of general eligibility there may be instances where environmental conditions require a level of fitness/mobility. In these cases, individual participation in the landing(s) in question may be restricted by the Captain, Expedition Leader, or ship's doctor.

**20. Medical Evacuation and Repatriation Insurance.** All passengers are covered by a medical insurance policy to the value of 100,000 EUR per person and the policy includes emergency evacuation and repatriation from remote regions. This is only for passengers under 85 years old. Passengers over 85 years old are to purchase their own insurance policy with coverage not less than 100,000 EUR. Such policy is to cover risks of repatriation/evacuation from extremely remote territories, and is to be sufficient for travelling in the High Arctic. Any risks, not covered by the insurance policy provided, are to be covered by passengers at his/her disposal and at his/her own expense. Insurance is in effect only on board the Ship and outside the port of Murmansk.

**21. Responsibility.** The payment of a deposit or full payment for a reservation on this tour shall constitute consent to all the provisions contained herein.

Operator or its agents are not responsible for any costs or penalties relating to air transport or other services that are cancelled. Operator is not liable for failure to provide the services or accommodations offered to the extent that such services or accommodations cannot be provided due to force majeure or other circumstances beyond its control.

Operator is a qualified tour operator that organizes and administers its polar voyages. Operator will provide services in conjunction with local operators and air and sea operators. The designated operator(s), in turn, acts only as an agent for any transportation carrier, hotel, ground operator, or other suppliers of services connected with these tours ("other providers"), and the other providers are solely responsible and liable for providing their respective services. The passenger tickets in use by the carriers shall constitute the sole contract between the carriers and the passenger; the carriers are not responsible for any act, omission, or event during the time participants are not aboard their conveyances.

Operator and its designated service providers shall not be held liable for (a) any damage to, or loss of, property or injury to, or death of, persons occasioned directly or indirectly by an act or omission of any other provider, including but not limited to any defect in any aircraft, watercraft, or vehicle operated or provided by such other provider; and (b) any loss or damage due to delay, cancellation, or disruption in any manner caused by the laws, regulations, acts or failures to act, demands, orders, or interpositions of any government or any subdivision or agent thereof, or by acts of God, strikes, fire, flood, war, rebellion, terrorism, insurrection, sickness, quarantine, epidemics, theft, or any other cause(s) beyond their control.

The participant waives any claim against Operator for any such loss, damage, injury, or death. In the event of Itinerary change due to any unforeseen circumstances or due to force majeure Operator is not to be held liable for any costs incurred by passengers in this case and no refunds or price adjustments are possible.

By registering for our voyage, the participant certifies that he/she does not have any mental, physical, or other condition or disability that would create a hazard for him/herself or other participants. Operator and its designated tour operator reserve the right in their

sole discretion to accept, decline to accept, or remove any participant from a voyage. Operator reserves the right, without penalty, to make changes in the published itinerary whenever, in their judgment, conditions warrant, or if they deem it necessary for the comfort, convenience, or safety of participants.

If a passenger misses any scheduled sailing of the vessel from any port or place, including any stopover, Operator shall not be liable for any costs, expenses or damages incurred by the passenger as a result of his/her action and no refund of fare shall be granted.

**22. Baggage.** Baggage and personal effects are at all times the sole responsibility of the participant.

**23. Limitations.** Passengers are not permitted to bring or have on board any pets or animals, firearms, flammable or hazardous items, controlled or prohibited substances or drugs, contraband or items prohibited by any country or port to be visited.

**Acceptance of the Terms & Conditions.** Acceptance of the initial services to be provided on the trip shall constitute an acceptance by the trip member of these terms and conditions. On advancement of deposit to Operator, the depositor therefore agrees to be bound by the above-recited Terms & Conditions.

## Expedition cruise aboard M/V SEA SPIRIT

By purchasing this product, you accept the present Terms and Conditions. In case you do not accept any of the Terms and Conditions of Poseidon Arctic Voyages Ltd. d.b.a. Poseidon Expeditions (Operator hereafter) you will not be able to take part in the expedition cruise.

**1. Rates and Accommodation.** Cruise rates are quoted per person and based on passengers sharing a cabin.

Cabin share is available only in the following categories: Triple Classic, Main Deck, Classic and Superior Suites.

Single accommodation in Main Deck Suite, Classic Suite and Superior Suite: 1.7x the shared rate; Single accommodation in Deluxe, Premium and Owner Suite: 2x the shared rate.

Triple-share accommodations are restricted to either individual travelers of the same gender or parties of three.

Those who booked shared accommodations aboard the ship – on either triple- or double-occupancy basis – will also share accommodations at the pre-cruise hotel, if applicable.

**2. Reservations and Payments.** A deposit of 20% of the appropriate cabin rate is required to confirm the reservation; the final payment (80%) is due 90 days prior to the departure.

All payments are to be made in the agreed currency indicated on the invoice. The deposit can be made by credit card or via bank transfer. The final payment is to be made via bank transfer. North American office also accepts credit cards and checks for deposit and final payment.

**3. Payment Delay.** The date of payment is considered to be the date of crediting the funds to the account of Operator.

In case of payment delay Operator has the right to apply payment delay fee which equals to 0.1% from the due amount for each day of delay.

**4. Booking Cancellations/Refunds.** All requests for cancellation must be made in writing. Reservations cancelled more than 120 days prior to departure are subject to a USD 750 per person cancellation fee. Reservations cancelled from 119 to 91 days prior to

departure are subject to 20% per person cancellation fee. Reservations cancelled 90 days or less prior to departure are subject to full fare forfeiture (cancellation fee is 100%). For these and other reasons mentioned below, passengers are strongly encouraged to obtain trip cancellation insurance.

The services included in the cruise rate are based on group participation, and no refunds will be made for any part of the program in which passengers choose not to participate, including any Zodiac cruises or landings. It should be understood that refunds will not be made to passengers who do not complete the tour for any reason whatsoever.

**5. Voyage Cancellation.** Operator reserves the right to cancel any departure due to insufficient reservations up to eight weeks before the date of departure (passengers may be offered alternative cruise dates).

In the very unlikely event that a voyage is cancelled prior to departure Operator will provide a full refund of all funds paid to Operator. Should a voyage cancel while in progress, Operator will provide a pro-rated refund of the funds paid to Operator.

Operator or its agents are not responsible for any costs or penalties relating to air transport or other services that are cancelled.

**6. Force Majeure.** Force Majeure means any event beyond a Party's reasonable control, which is unavoidable and extraordinary including without limitation acts of God, natural catastrophes/adverse weather conditions, epidemics, pandemic or any other viral outbreaks, global health emergencies events, contaminations, public

unrest/strikes, war, changes in laws or regulations, coercive measures by the state or quarantines, which unreasonably hinder or temporarily make the fulfillment of the route and the services on board partly or completely impossible, shall entitle Poseidon Expeditions to postpone/suspend the performance of any travel services or the pursuit of the route for the duration of the hindrance in days.

In case the Force Majeure event occurs prior to the departure Poseidon Expeditions will use commercially reasonable efforts to offer the closest available or any substitute cruise.

Otherwise the Company's passengers will receive personal cruise credit or voucher (hereinafter CC/V) for the NET paid amount. CC/V will be valid for 12 months from the departure date of the affected cruise and can be extended for another period of 12 months. If after all CC/V is not redeemed until its expiry Poseidon Expeditions will reimburse the original amount in full.

In such case, Poseidon will notify as soon as possible following the occurrence or date of commencement of such Event of Force Majeure giving information on the nature and the effects of the force majeure event.

It is understood that the force majeure policy will be applicable unless any special law or regulation is enacted regulating and/or determine the duration and/or the effects of the Force Majeure Event, of which the provisions will prevail of this clause.

In case the Force Majeure event occurs while the cruise is in progress Poseidon Expeditions and the Company shall use their best efforts for the contract to survive and to mitigate the impact of Force Majeure event on cruise performance.

**7. Transferred reservations/name changes.** Bookings transferred from one departure (more than 90 days prior to departure) to another, for the same passenger can be made at no charge, based on availability. The transfer of the booking to another departure can only be made once. Starting cancellation fee level

for the transferred booking will be the same as the cancellation fee level for the original booking at the time of the transfer. By direct permission, and on a limited basis, name changes on a reservation can be made at a fee of USD 300 per person, but not less than 90 days before the departure.

**8. Children.** Children must be at least 12 years of age to participate in the expedition cruise. However, Operator may accept children ages 6-11 on a case by case basis after additional consideration by the Operator.

**9. On-board language.** All voyages are conducted in English and German. For groups of passengers speaking other languages, Operator recruits multi-lingual staff members, who assist the passengers during briefings and lectures. Staff varies from voyage to voyage; please check when booking.

**10. On-board authority.** All passengers are subject to instructions or regulations given by the Captain or the Expedition Leader.

**10. On-board payments.** All payments are in US dollars. Passengers may run a tab which must be paid prior to disembarkation. Payments can be made in cash or via credit card.

**11. Itinerary.** The itineraries published on the Operator's website and in any other sources serve as examples only. Real itineraries of any expedition cruise (including all scheduled landings and excursions) in polar regions are heavily dependent on weather and ice conditions. Occasionally, conditions and/or safety concerns require itinerary changes. The Captain and the Expedition Leader will accordingly make every effort to find the best alternative to the original itinerary while keeping passengers informed and updated. It is understood that such decisions will be made in the interests of all passengers aboard and with regard to the safety of the vessel. Itinerary changes are not subject to passenger approval/consent and in the event of such a change no refunds or price adjustments are possible.

Operator expressly reserves the right to change the itinerary, the date or place of departure due to weather conditions, availability of anchorages, political conditions and other factors beyond Operator's control without consulting the participants. Placement of a booking with Operator amounts to an acknowledgement that itinerary changes are possible.

**12. Changes in Vessel.** The Operator may at any time substitute vessels. Passengers will have no claim against the Operator for inconvenience or expense whatsoever by reason of any change of the Vessel.

**13. Photography/Video.** Operator reserves the right to use photographs and/or videos taken during the operation of the voyage for promotional purposes for the Operator and/or its sales agents. Passengers may not charge for their appearance in any photographs or video.

**14. Smoking.** Smoking in cabins or public areas of the ship is strictly prohibited by safety regulations. There will be a designated smoking place outside in a sheltered area.

**15. Alcohol.** Alcohol beverages are available for sale in the on-board bar. Operator reserves the right to refuse alcohol to anyone deemed to be intoxicated.

**16. Eligibility.** There are no specific physical requirements for travel in polar regions. However, the purchased expedition cruise is a cruise to the remote region of the world on a ship which, at times, may be in rough seas. Please also note that there is no specialized medical assistance available in these regions. Passengers with certain medical/health issues may not be appropriate for this type of expedition and are advised to exercise appropriate caution. Our medical information form lists a number of these conditions.

**17. Pre-departure forms.** Prior to boarding, specific passenger information is required by Operator for passenger safety and for international reporting

regulations. Required information must be completed in the forms provided by Operator and submitted at least 60 days prior to departure. Final documents cannot be issued for passengers whose information has not been received.

**18. Passenger Medical Information.** We require all passengers to submit basic medical information prior to departure. Upon receipt of that basic medical information, specific physical conditions may necessitate additional documentation from a passenger's physician certifying fitness to travel on a polar expeditions voyage. If additional medical confirmation is requested, boarding will not be allowed absent receipt of that confirmation. Operator has a pregnancy policy that women are welcome with explicit doctor's permission and having signed a specific waiver. Pregnancy policies of carriers (ship owners, airlines, bus companies, hotels, etc.) may also apply. Please note that medical information will, of necessity, be available to designated Operator's staff.

**19. Important Notice:** Please be advised that prospective passengers must carefully consider whether their health condition is adequate for participation in the expedition cruise taking place in remote and hard-to-reach regions, where emergency evacuation is not always available. Passengers must complete the provided medical information form and provide the Operator with permission from their physician in case of serious or chronic medical conditions. If the passenger decides to participate in the cruise in spite of a medical condition and/or the concerns of their physician and their condition deteriorates while aboard, requiring emergency evacuation that the passenger's insurance company does not recognize as appropriate and/or legitimate, all evacuation expenses will be borne by the passenger.

Operator has a pregnancy policy that women are welcome with explicit doctor's permission and having signed a specific waiver. Pregnancy policies of carriers (ship owners, airlines, bus companies, hotels, etc.) may also apply. Please note that medical information will, of necessity, be available to designated Operator's staff. Operator has a pregnancy policy that women are welcome with explicit doctor's permission and having signed a specific waiver. Pregnancy policies of carriers (ship owners, airlines, bus companies, hotels, etc.) may also apply. Please note that medical information will, of necessity, be available to designated Operator's staff.

Please note that regardless of general eligibility there may be instances where environmental conditions require a level of fitness/mobility. In these cases, individual participation in the landing(s) in question may be restricted by the Captain, Expedition Leader, or ship's doctor.

**20. Medical Evacuation and Repatriation Insurance.**

All passengers are required to carry valid evacuation and repatriation insurance which must contain medical and evacuation coverage.

As any potential evacuation from the polar regions can cost up to US\$200,000 for the Arctic and Antarctica cruises, we recommend that no policy carries less than this amount of coverage. As part of pre-departure forms Operator will require information as to the insurance company, policy number, amount of coverage and 24-hour contact number. Any risks, not covered by the insurance policy provided, are to be covered by passengers at his/her disposal and at his/her own expense.

**21. Responsibility.** The payment of a deposit or full payment for a reservation on this tour shall constitute consent to all the provisions contained herein.

Operator or its agents are not responsible for any costs or penalties relating to air transport or other services that are cancelled. Operator is not liable for failure to provide the services or accommodations offered to the extent that such services or accommodations cannot be

provided due to force majeure or other circumstances beyond its control.

Operator is a qualified tour operator that organizes and administers its polar voyages. Operator will provide services in conjunction with local operators and air and sea operators. The designated operator(s), in turn, acts only as an agent for any transportation carrier, hotel, ground operator, or other suppliers of services connected with these tours ("other providers"), and the other providers are solely responsible and liable for providing their respective services. The passenger tickets in use by the carriers shall constitute the sole contract between the carriers and the passenger; the carriers are not responsible for any act, omission, or event during the time participants are not aboard their conveyances.

Operator and its designated service providers shall not be held liable for (a) any damage to, or loss of, property or injury to, or death of, persons occasioned directly or indirectly by an act or omission of any other provider, including but not limited to any defect in any aircraft, watercraft, or vehicle operated or provided by such other provider; and (b) any loss or damage due to delay, cancellation, or disruption in any manner caused by the laws, regulations, acts or failures to act, demands, orders, or interpositions of any government or any subdivision or agent thereof, or by acts of God, strikes, fire, flood, war, rebellion, terrorism, insurrection, sickness, quarantine, epidemics, theft, or any other cause(s) beyond their control.

The participant waives any claim against Operator for any such loss, damage, injury, or death. In the event of Itinerary change due to any unforeseen circumstances or due to force majeure Operator is not to be held liable for any costs incurred by passengers in this case and no refunds or price adjustments are possible.

By registering for our voyage, the participant certifies that he/she does not have any mental, physical, or other condition or disability that would create a hazard for him/herself or other participants. Operator and its designated tour operator reserve the right in their sole discretion to accept, decline to accept, or remove any participant from a voyage. Operator reserves the right, without penalty, to make changes in the published itinerary whenever, in their judgment, conditions warrant, or if they deem it necessary for the comfort, convenience, or safety of participants.

If a passenger misses any scheduled sailing of the vessel from any port or place, including any stopover, Operator shall not be liable for any costs, expenses or damages incurred by the passenger as a result of his/her action and no refund of fare shall be granted.

**21. Baggage.** Baggage and personal effects are at all times the sole responsibility of the participant.

**22. Limitations.** Passengers are not permitted to bring or have onboard any pets or animals, firearms, flammable or hazardous items, controlled or prohibited substances or drugs, contraband or items prohibited by any country or port to be visited.

**Acceptance of the Terms & Conditions.**

Acceptance of the initial services to be provided on the trip shall constitute an acceptance by the trip member of these terms and conditions. On advancement of deposit to Operator, the depositor therefore agrees to be bound by the above-recited Terms & Conditions. Above-recited Terms & Conditions are valid at the time of going to press.

For the up to date version of Terms & Conditions please visit [www.poseidonexpeditions.com](http://www.poseidonexpeditions.com)

**For Poseidon Expeditions USA**

Seller of Travel Permits:


California: #2141840-40


Florida: #M19000009934


Iowa: #1612


Washington State: #604513194

## Follow us:

 /poseidonexpeditions

 /poseidonexpeditions

 /poseidonexpeditions

 /poseidonexp

2022/2023  
PHOTO CREDIT:

Sofia Astashova, John Bozinov, Tavish Campbell, Page Chichester, Alex Cowan,  
Dietmar Denger, Sergey Dolya, Lauren Farmer, Sergey Gorshkov, Brandon  
Harvey, Clive Johnson, Filip Kulisev, Holger Leue, Ida Olsson, Olga Parshina,  
Nikolay Saveliev, Anthony Smith, Georgina Strange, Visit Greenland

For reservations contact your travel professional:  
[sue@adventureassociates.com](mailto:sue@adventureassociates.com)

